

WIRE ROPE SOCKETS



Wire rope Sockets are a common way to Terminate wire rope. Especially with Winch Wires. When used in conjunction with Wirelock, There is no reduction factor on the termination allowing for 100% use of the wire rope MBL.

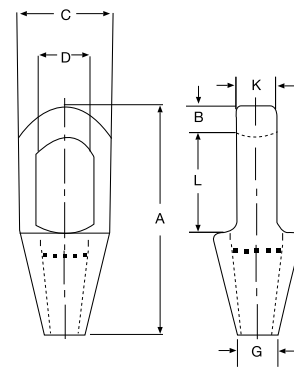
Rope Dia (mm)	MBL (t)	Weight Each (kg)	Dimensions (mm)						
			A	B	C	D	G	K	L
6-7	8	0.3	101	11	37	22	8.5	13	40
8-10	12	0.5	119	14	43	25	12	17.5	48
11-13	20	0.7	140	18	52	30	14.8	23.4	58
14-16	25	1.5	162	21	68	37	17.6	26	66
18-19	40	2.1	194	27	76	42	21.5	32	78
20-22	55	3.6	224	33	92	47	24	38	90
23-26	75	5.8	253	36	104	57	28	44	103
27-30	90	7	282	39	114	63	32	51	116
31-36	125	10.5	312	43	127	70	38	57	130
37-39	150	13	358	51	136	79	41	63	155
40-42	170	17	390	54	146	83	44	70	171
43-48	225	26	443	55	171	93	51	76	198
49-54	280	37.5	502	62	193	100	57	82	224
55-60	360	50	548	73	216	112	63	92	247
61-68	425	65	597	79	241	140	73	102	270
69-75	460	94	644	79	273	159	79	124	286
76-80	560	115	686	83	292	171	86	133	298
81-86	625	145	743	102	311	184	92	146	311
87-93	720	168	788	102	330	197	99	159	330
94-102	875	210	845	108	362	216	108	178	356

* Cast Alloy Steel

Closed Spelter Sockets



G-6411 Van Beest Closed Spelter Socket



Rope Dia	MBL (t)	Weight Each (kg)	Dimensions (mm)					
			A	B	C	D	F	L
6-7	8	0.4	109	51	19	16	8.5	30
8-10	12	0.8	124	63	21	21	12	34
11-13	20	1	143	67	26	25	15	37
14-16	25	1.8	172	85	33	30	18	49
18	40	3	205	98	38	35	21	58
20-22	55	4.6	235	111	44	41	24	68
23-26	75	8	275	132	51	51	28	75
27-30	90	11	306	144	57	57	32	85
31-36	125	16	338	155	63	63	38	95
37-39	150	23	394	180	76	70	41	127
40-42	170	27	418	187	76	76	44	127
43-48	225	41	468	213	89	89	51	133
59-54	280	58	552	240	101	95	57	180
55-60	360	85	598	270	113	108	63	196
61-68	425	125	654	303	127	121	73	212
69-75	460	155	696	349	133	127	79	215
76-80	560	173	737	371	146	133	86	219
81-86	625	230	788	391	159	140	92	228
87-93	720	265	852	411	171	152	99	242
94-102	875	370	914	447	191	178	108	254

* Cast Alloy Steel

Open Spelter Sockets



G-6411 Van Beest Open Spelter Socket

