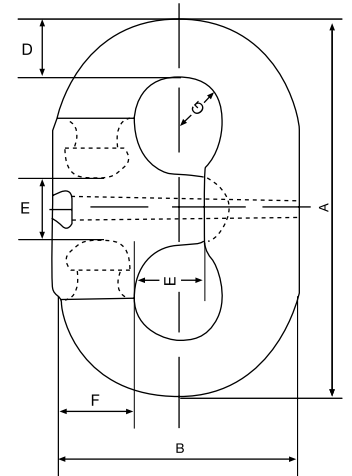
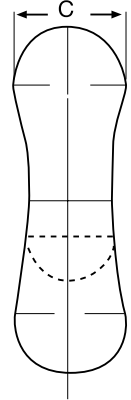


ANCHOR CHAIN FITTINGS



DETACHABLE CONNECTING LINK (C-LINK)

Chain Size (mm)	A (mm)	B (mm)	C (mm)	D (mm)	E (mm)	F (mm)	G (mm)	Weight (kg)
30-32	190.5	127	44	32	35	39	21	4.5
33-35	210	140	49	35	39	42	23	6.0
36-38	229	152	53	38	43	46	25	7.8
40-42	248	165	57	41	50	50	27	10.0
43-44	267	190	62	44	51	56	30	12.5
46-48	286	194	64	48	55	60	31	14.5
50-51	305	197	64	51	59	64	33	16.5
52-54	324	210	67	54	64	67	36	20.0
56-58	343	221	71	57	67	71	38	23.5
59-60	362	234	78	60	70	75	40	27.5
62-64	381	246	79	64	73	78	42	32.0
66-67	400	246	83	67	78	79	44	37.0
68-70	419	275	92	73	83	90	46	45.5
71-			94	73	85	93	48	48.5
74-76	457	295	95	76	90	94	50	54.5
78-79	476	308	102	79	92	96	52	62.5
81-83	495	320	103	83	92	103	55	73.0
84-86	514	332	107	86	100	107	57	80.5
87-89	537	350	116	92	105	114	59	93.5
90-92	552	356	119	92	106	116	61	97.5
94-95	571	368	122	95	114	119	62	116.0
97-98	590	381	127	98	117	121	67	123.0
100-102	607	394	132	102	119	122	68	130.0



WIDE BODY SHACKLES

S.W.L (t)	Thimble Size (inches)	Dimensions (mm)					Weight (kgs)
		A	B	C	D	E	
60	11-13"	70	76	160	360	165	59
85	14-15"	80	90	220	390	178	85
110	16-18"	90	100	254	430	210	122
130	19-21"	100	114	290	480	235	170
200	19-21"	125	133	300	600	265	282
225	22-24"	130	146	333	720	305	349

